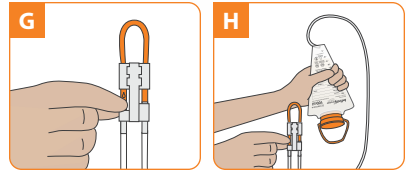
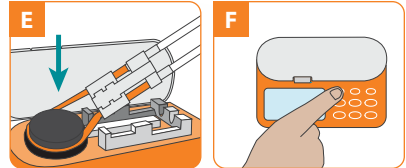
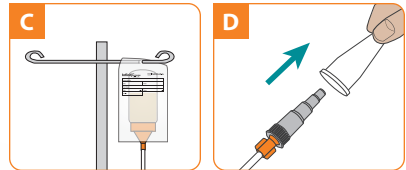
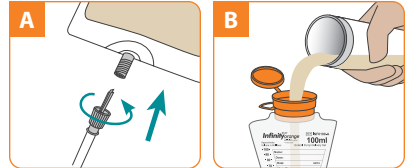


Priming and Loading the Disposable Set

These instructions are not a substitute for the operator's manual. Be sure to read the operator's manual thoroughly prior to operating the pump. See other side for pump operation instructions.

STEP 1

- If you are using the Infinity Spike set, remove protective cover from connector and insert connector tip into compatible port on the enteral formula container (image A). Secure the connector by tightly screwing threaded components together.
- If you are using the 100 mL, 500 mL, or 1200 mL disposable set, hold the bag's funnel upright and pour in feeding formula. Close cap tightly and hang bag (image B).
- If you are using the Screw Cap delivery set, fill a feeding bottle/container with a 40 mm opening and secure it to the screw cap. Place the bottle into the suspension bag and secure the bag to an IV pole (image C).



STEP 2

Remove protective cover from the feeding tube connector (image D).

STEP 3 - PRIMING

IF PUMP PRIMING: Loop the silicone tubing around the pump wheel stretching lightly. Seat cassette into the pump and close the door (image E).

Turn pump on by pressing and holding the **ON/OFF** key until the pump beeps (image F). Then, press and hold the **PRIME** key until formula reaches the feeding tube connector.

NOTE: If your pump is equipped with an auto prime option, refer to the Operator's Manual for details.

IF MANUAL PRIMING: Gently pinch orange colored tubing below the "🔥" symbol (image G). While pinching, gently squeeze the bag at the same time to assist fluid flow. Hold this position until formula reaches the feeding tube connector.

Loop silicone tubing around pump wheel stretching lightly. Seat cassette into pump (image E). Close pump door.

FOR BACKPACK USE: Turn the bag upside down and tilt the bag to keep air at tubing port (image H). Gently pinch orange colored tubing below the "🔥" symbol (image G). While pinching, gently squeeze the bag at the same time to assist fluid flow. Hold this position until formula reaches the feeding tube connector.



Speak live with a Moog Clinical Representative for pump questions and troubleshooting guidance 24 hours per day, 7 days per week.

Clinical & Customer Support 800.970.2337

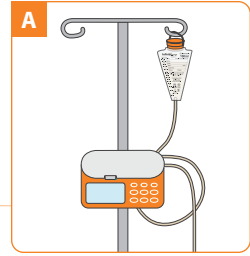
Visit infinityfeedingpump.com for additional information

MOOG[®]

Enhancing Healthcare.
Enriching Lives.™

Programming and Running the Pump

These instructions are not a substitute for the operator's manual. Be sure to read the operator's manual thoroughly prior to operating the pump. See other side for pump operation instructions.



Hang the feeding container	Hang feeding container so that the bottom of the bag is at or above the level of the pump door (image A).	
Turn on the pump	Press and hold the ON/OFF key for 1.5 seconds to turn the pump on. The display will show the last programmed rate.	
To program the rate (how fast your pump runs)	Press the RATE/DOSE key to display "RATE" in the lower-left corner of the screen. Use the + and - keys to program the rate.	
To program the dose (how much is to be fed)	Press the RATE/DOSE key to display "DOSE" in the lower-left corner of the screen. Use the + and - keys to program the dose.	
To set the food type (what type of food is being fed)	Press the FOOD TYPE key to display the type of food to be delivered. Press the + and - keys to change between formula and human milk.	
Start the pump	Press the RUN/PAUSE key to start the pump.	
When feeding is complete	When feeding is complete, press the ON/OFF key for 1.5 seconds to turn the pump off.	
To clear settings	Press the CLEAR key to reset the displayed value. Press and hold the CLEAR key for 3 seconds to reset rate, dose, and volume delivered values at the same time.	
View volume delivered	Press the VOL/TOTAL key once to display volume delivered for the current feeding. Press the key again to display the total cumulative volume delivered since the total volume was last reset.	

NOTE: If pump is turned off and turned back on again, the volume delivered counter resets to 0 and food type resets to formula. Rate, dose, and food type must be confirmed before restarting the pump with a new feeding.

NOTE: Any changes to pump settings (except food type) during a feeding cycle will cause pump to start a new feeding; it will not start where it left off. Rate, dose, and food type must be confirmed by viewing each parameter before restarting the pump.

MOOG®